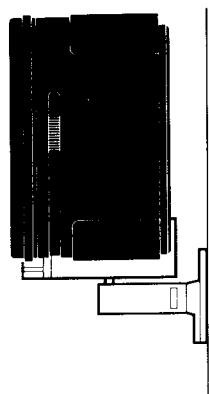


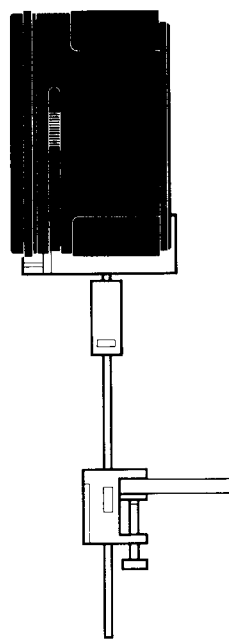
Optional Mounting Brackets

The JBL Pro 3 is designed for use with two types of special mounting brackets which are available from your JBL dealer. Each enables you to securely place the Pro 3 in a wide range of locations. See figure below.

MTC-2 Ceiling/Wall Mount Bracket

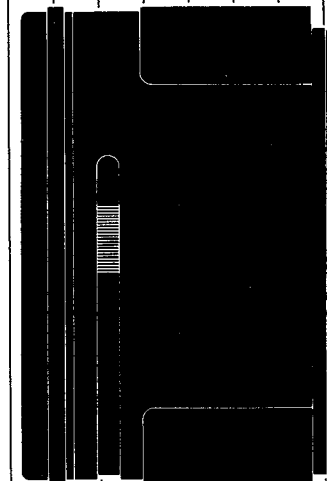
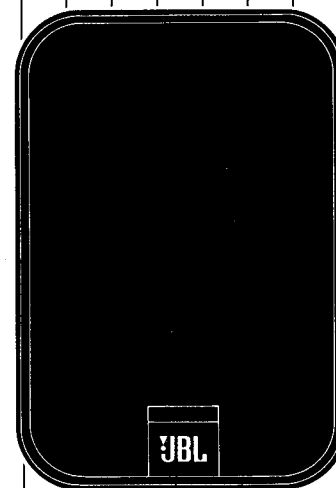


MTC-3 Shelf Mount Bracket



pro III

T I T A N I U M



Personal Size Monitor Loudspeaker
Instruction Manual

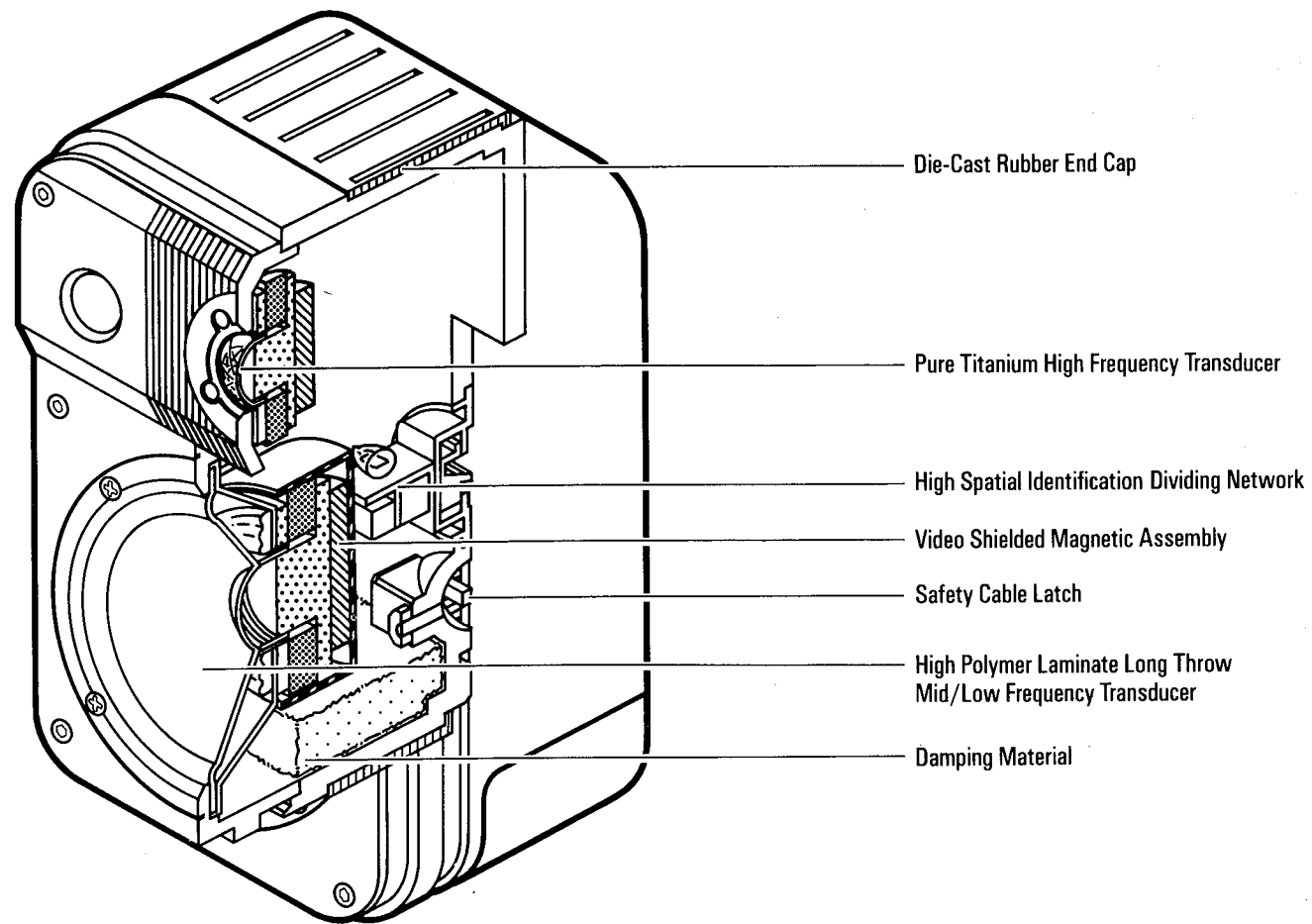
JBL Incorporated
Northridge CA USA

Printed in Japan



A Harman International Company



Pro III*Introduction*

Thank you for purchasing JBL Pro 3 Monitors. Their remarkable design enables them to be used in a wide variety of applications including video systems, protected outdoor sound systems and any place a compact, yet high fidelity sound source is preferred. Pro 3 Monitors feature a Titanium High Frequency Unit which uses exclusive JBL technology to offer unsurpassed frequency response, low distortion and wide dynamic range.

First, the Paperwork

Before proceeding, be sure to put your sales receipt in a safe place. It is necessary for proof of purchase, warranty repairs and insurance purposes. Also fill out the enclosed warranty card and mail it.

Acoustics and Proper Mounting Locations

Where you place your JBL Pro 3 Monitors will have a great effect on how they sound. Speakers work with—or are hindered by—the acoustics of a room. Proximity to walls and corners and even how high or low they are placed on bookshelves all have marked effects on performance.

Placement for Best Stereo Imaging In determining how far apart to space your Pro 3's, look at the angle between you and the two speakers. Try to achieve reasonably close to a 60 degree angle. This means that if the speakers are close together the optimum listening point is relatively close, too. Conversely, if the speakers are farther away from you, they should also be farther apart from one another. If you are placing your Pro 3's on their sides, make sure that the tweeters (smaller speaker elements) are on the outside (see Fig. 2).

Placement for Best Bass Response Careful positioning of your Pro 3's, can maximize their bass output. A speaker placed close to a surface in the room such as a floor, ceiling or wall will "couple" to that surface resulting in increased bass. Placing a speaker with its back to one wall will give you slightly increased bass. Putting the speaker in a corner halfway between the ceiling and floor (through use of optional Pro 3 Mounting Brackets) will give you even more bass.

Placement for Best Treble Dispersion High musical sounds such as vocals, violins, lead guitars, cymbals, etc. are more directional than bass and midrange. It is important that they be as close to ear level as possible. Placing your JBL Pro 3's too close to the floor will result in loss of high notes

which end up being directed at your kneecaps or into the carpet. If your particular application requires low placement, consider the use of optional Mounting Brackets. These allow you to tilt the Pro 3 up towards ear level, or physically elevate it using an adjustable extension (see Mounting Bracket Illustrations). If you are placing the speakers higher than ear level (such as on a shelf or on wall brackets) invert the speaker so that the tweeter is BELOW the midrange/woofer (see Fig. 2).

Note that the JBL Pro 3 insignia on each speaker may be rotated to any of four positions so that it is upright regardless of speaker orientation.

Specialized Placements JBL Pro 3 Monitors make excellent video extension speakers. Their internal shielding means you can place them directly next to a video monitor without causing picture distortion. They may also be wall mounted at the rear of a room for use as rear channel surround sound sources.

While Pro 3's are not waterproof, they are extremely weather-resistant and may be placed outside in sheltered areas such as patios or under roof eaves. Make sure, however, that precipitation and direct sunlight do not reach them.

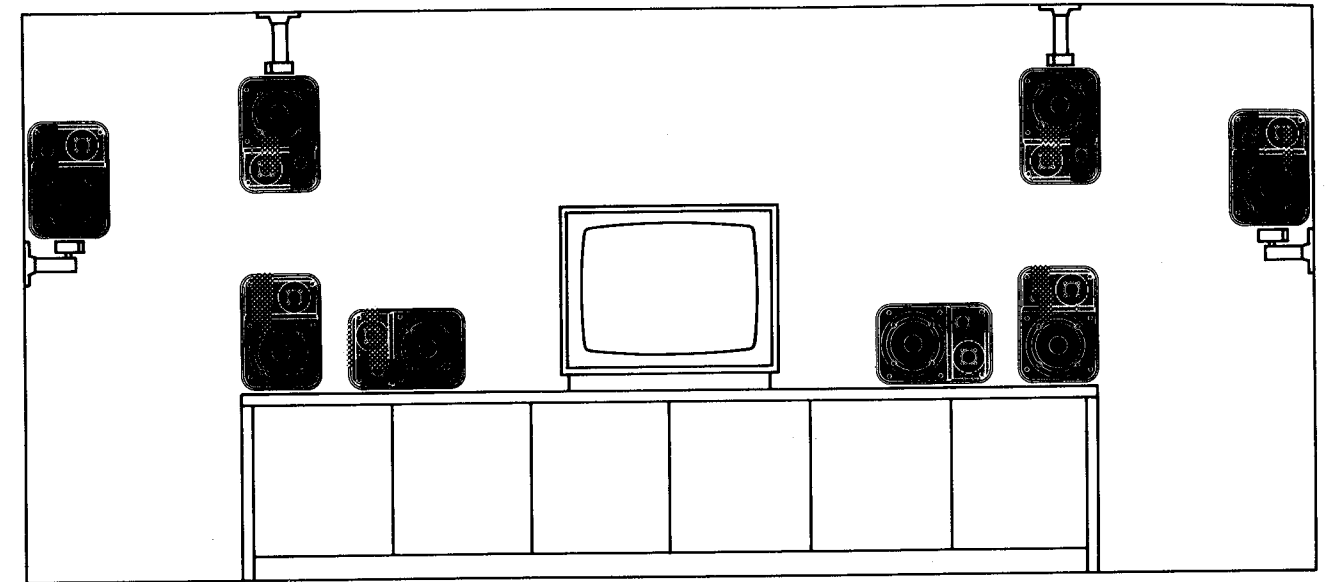


Figure 2 Possible Pro III Speaker Locations

Hooking Up Your Pro III Monitors

What Kind of Wire to Use For best results, we recommend the use of specially designed ultra-low resistance, oxygen-free speaker wire. Available from your JBL dealer, it allows the maximum power and frequency bandwidth and represents an important link in the sound chain.

However, any insulated, multi-stranded copper wire may be used, provided it is of the proper gauge (thickness). The easiest to obtain is ordinary lamp cord, available at hardware stores. The

size to use depends on the distance between your amplifier and your Pro 3 Monitors. The table below shows the allowable run lengths for different wire gauges as measured one way from your amplifier to the speaker.

Wire Length	Gauge of Copper Wire
• Up to 18 ft	• 18 gauge
• Up to 30 ft	• 16 gauge
• Up to 48 ft	• 14 gauge
• Almost any distance	• Special speaker cable

Preparing the Hookup Wire Make the hookup wires for both speakers the SAME LENGTH, even if one Pro 3 is closer to your amplifier than the other. This may mean coiling up some wire if one speaker is quite close and the other is far away, but it must be done to maintain proper signal balance.

Now separate the two conductors for a distance of about one inch, and strip off 3/8" of insulation from both ends of each conductor.

Connecting Your Pro 3 Monitors Your amp or receiver has a + (red) and a - (black) speaker output terminal. Each Pro 3 also has corresponding + and - terminals on their back sides. It is important to hook both speakers up in an identical

manner—red-to-red and black-to-black—so that they are “in phase.” (Hooking them up “out of phase” results in a thin sound with poor stereo image and a lack of bass).

Almost all double stranded wire has a means of differentiating one strand from the other. This could be a different color conductor, a strand of yarn in one conductor or ribs on one part of the insulation. **IT DOES NOT MAKE ANY DIFFERENCE WHICH OF THE TWO STRANDS OF WIRE GO TO (+) AND (-) ON THE SPEAKERS AND AMPLIFIER, AS LONG AS BOTH SPEAKERS ARE DONE IDENTICALLY.**

Make sure that the two speaker wire conductors do not touch or short out. It only takes one little fine piece of wire out of place to cause a short.

Pro III Use and Maintenance

JBL Pro 3 Monitors are designed to handle up to 100 watts per channel. Using more power than this voids your warranty and can lead to potential damage. Interestingly enough, however, using **NOT ENOUGH** power at high volumes can cause even more problems. In fact, it's the number one cause of speaker damage. When an amplifier is called on to deliver more power than it has been designed to put out, “clipping” can result. Even through Pro 3's Titanium Tweeters have excellent power handling characteristics,

this amplifier phenomenon can cause eventual speaker burnout. To avoid it, never turn your amplifier up to where your Pro 3's start sounding fuzzy or distorted. If this happens, you're hearing advanced clipping which can lead to speaker failure in extreme cases. If you want to play your Pro 3's loud, invest in an amplifier with more RMS wattage output. The extra reserves of power will reduce clipping and let you get the loudness you want without potential damage.

Specifications

- **Maximum Recommended Amplifier Power:** 100 watts continuous average power
- **Minimum Recommended Amplifier Power:** 10 watts continuous average power
- **Nominal Impedance:** 4 ohms
- **Crossover Frequency:** 3000 Hz
- **Dimensions:** 9¼" x 6¼" x 5⅝"
(235mm x 159mm x 143mm)
- **Net Weight:** 5.5 lbs (2.5 kg)

JBL continually engages in research related to product improvement. New materials, production methods and design refinements are introduced into existing products without notice as a routine expression of this philosophy. For this reason, any current JBL product may differ in some respect from its published description but will always equal or exceed the original design specifications unless otherwise stated.

Service

Should Your JBL Pro 3 Monitors need service, please return them to the dealer from whom they were purchased. Remember to bring the sales receipt or invoice with you.

You can obtain warranty service from any of the authorized stations listed on the enclosed brochure. Simply take or ship your speakers postage prepaid to the nearest authorized center. For your own protection, we suggest you insure your shipment as damages may occur and are not covered by this warranty.